

The Welby Way

BEE LINE

THE LATEST NEWS AT WELBY WAY CHARTER ELEMENTARY SCHOOL

Kristy Sundberg, Editor

www.welbyway.org

November 2016



Upcoming Parent Conferences

A Message from Assistant Principal, Helen Kim

The first term of this school year is already coming to an end, and we would like to remind you of upcoming parent conferences scheduled for the week of November 7th. Parent conferences are just one essential piece to greater family engagement at Welby Way, and we encourage you to make the most of this one-to-one time with your child's teacher.

Parent conferences are a great way to start talking to your child's teacher, if you haven't already. You will gain information about your child's progress but also get a chance to share information about your child's talents and needs, which may be valuable for the teacher to better understand your child.

What can you expect?

- During parent conferences, your child's teacher will share how your child is progressing academically, based on various grades such as classroom test and project results, as well as observations of their work habits and social skills. Ask to see data about your child's attendance, grades, and test scores. Find out whether your child is meeting the school expectations and academic standards. Also, take this opportunity to share what your child is like at home. Important and relevant information can help the teacher support your child more effectively and efficiently.
- Your child's teacher will discuss your child's strengths but also how he/she can do even better. To prepare for the conversation, review your child's homework, tests, and notices before the conference. Be sure to bring a list of questions that you would like to

Important Dates!

Thurs. 11/3: Magnet Tour #4 from 8:30 – 10:30 in Library.

Sun. 11/6: Welby Way Fall Festival – 11:00 – 4:00

Thurs. 11/7: Magnet Tour #5 from 8:30 – 10:30 in Library.

Thurs. 11/10: eChoices Magnet applications due.

Fri. 11/11: School Closed for Veteran's Day

Tues. 11/15: POWW Mtg @ 8:00 a.m. in Room 37.

Tues. 11/15: Site/Governance Council Meeting @ 7:00 p.m. in library.

Wed. 11/16: Lifetouch Picture Retake Day

Wed. 11/16- 11/17: Pizza Rev Restaurant Fundraiser from 11:00 a.m – 9:30 p.m.

Thurs. 11/17: 5th Grade Colonial Day

Mon. 11/21 thru Fri. 11/25: School Closed for Thanksgiving Break

MINIMUM DAYS (Dismissal @12:30): Monday, November 7, Wednesday, November 9, Thursday, November 10. School Buses will leave at 12:30 pm.

Congratulations to our October Honor Assembly Winners!!

Kinder: William Z., Averi W., Patrick B. **First:** Emily D. (Sept.); Parker S., Ameet C., Manoan V., Juliana P., Phoebe B. **Second:** Mikayla B., Joseph C., Laila P., Samantha N., Christian R., Aditi M., Kiersten C. **Third:** Isha P., Jacob S., David A., Max P., Daniel S., Elizabeth H. **Fourth:** Sophia G., Elijah M., Joshua C., Alisha S., Jacob S., Alyssa Bl, Insiyah K., Daniel A., Matthew B., Taylor S. **Fifth:** Katie F., Jacob F., Maxwell M., Evan P., Castille L., Neey L, Beatrice O., Ethan G., Mackenna S., Srinandha M.

ask the teacher.

What can you talk to the teacher about?

- Find out your child's progress by asking questions like: *Is my child performing at grade level? What do you see as his/her strengths? Does my child need additional help in any areas? What are the academic challenges for my child? How could he/she improve? How is my child doing socially?*
- Ask about your child's assignments and assessments. *How is my child doing with homework? Does my child have any missing assignments?*
- Be sure to share your thoughts and feelings about your child as a student this year. Share with the teacher what your child has enjoyed in school so far and the area in which you feel s/he needs more support. If there have been any significant changes in your child's life that may affect your child's academic progress, this is a good opportunity to discuss that with the teacher.
- Ask what you can do at home to support your child's learning experience. What resources are available to help me support my child's learning? Are there any programs or services in the community that could also help my child?

When speaking with your child after your conference with the teacher, we would like to encourage you to approach that conversation with the belief that your child can cultivate positive changes through effort and hard work. Such is the belief of the growth mindset. Children differ greatly – in aptitude, talents, interests, and/or temperaments – especially in this developmental season of their lives. However, everyone can change and grow through application and experience. You may want to consider the effect of these words when speaking with your child:

- I've noticed the effort you're putting into...
- All of your hard work and practice is resulting in progress in...
- I'm proud of how committed you have been to learning...
- How do you feel about not getting the result you wanted first time? Are you clear on what you need to do to improve your learning next time?
- You made a mistake. That's ok. We all make mistakes when we're learning something new. What can you learn from it, to improve next time?

Mistakes are a great opportunity to get feedback. Through our mistakes, we recognize an opportunity to learn and grow and push ourselves beyond our comfort zone. You can help your child to focus their effort and attention and encourage practice. Targeted effort will yield positive results, and your child will regard the learning experience as challenges to embrace.

We at Welby Way strongly believe that student success is a result of shared responsibilities. We are committed to reaching out to our families in meaningful ways and are grateful for the active support of our parents in their children's learning and development.

Site/Governance Council Elections:

We have one spot open for our 2016-17. Please contact Mrs. Yoo, Principal, by Monday, November 14, if you would like to be placed on the ballot.

English Language Advisory Committee (ELAC):

We still need two parents whose children are English Learners to be a part of our ELAC committee. Please contact Mrs. Yoo, Principal, at 818.348.1975 if you can serve on our committee.



POWW Information:



Fall Festival Set For November 6: The Welby Way Fall Festival is coming up on Sunday, November 6 from 11:00 a.m. – 4:00 p.m.. This is an event you won't want to miss! We will have games, prizes, food, demonstrations and lots of fun. This is looking to be an event you won't want to miss. Everybody is welcome.

Pizza Rev Restaurant Day/Night Set for November 16/17 : No need to cook on November 16 and/or November 17. It is Welby Way Pizza Rev day from 11:00 a.m – 9:30 p.m. Come visit Pizza Rev and a portion of the sales will come back to Welby.

Donate Your Halloween Candy! Don't want your kids to eat all that Halloween candy? No worries! Dr. Leila from Woodland Hills Dental Care will be accepting left over candy from November 1 - 7th AND will make a donation to Welby Way!! Have your child bring their extra candy to the classroom or to the front office.

Shop Amazon for the Holidays and Welby Gets \$\$: Just a reminder to click on this Amazon link before you do any of your holiday shopping. Amazon will give a percentage of what you spend to the school. Tell your friends and family! <https://sites.google.com/site/parentsofwelbyway/support>.

McTeacher Night Rescheduled to January 18: Our McTeacher's night has been rescheduled to January 18. Mark your new 2017 calendar!

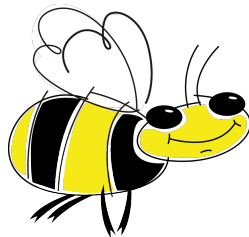
Lost & Found: Don't forget to check the Welby Way Lost and Found for any missing items. We are overflowing! Please label all items with your child full name and room number. We will do our best to return items to their appropriate owners. Any unclaimed items will be donated to charity before winter break.

Parent Teacher Conferences Week of 11/7 – 11/10: Parent/Teacher Conferences will be the week of November 7. Monday, Wednesday, and Thursday of that week is a 12:30 p.m. dismissal. Tuesday is always a 1:30 p.m. dismissal. School is closed Friday, November 11. The yard will be open until 6:00 p.m.

THANK YOU TO ALL OF YOU WHO DECORATED YOUR CARS AND DONATED CANDY TO CREATE AN AMAZING TRUNK OR TREAT NIGHT! SPECIAL THANKS TO THE VOLUNTEERS FOR ORGANIZING!

PLEASE VISIT OUR WELBY WAY WEBSITES:

www.welbyway.org and www.parentsofwelbyway.com



(Contact the Beeline Editor at kristy.haystack@gmail.com)